



## Let's getting started!

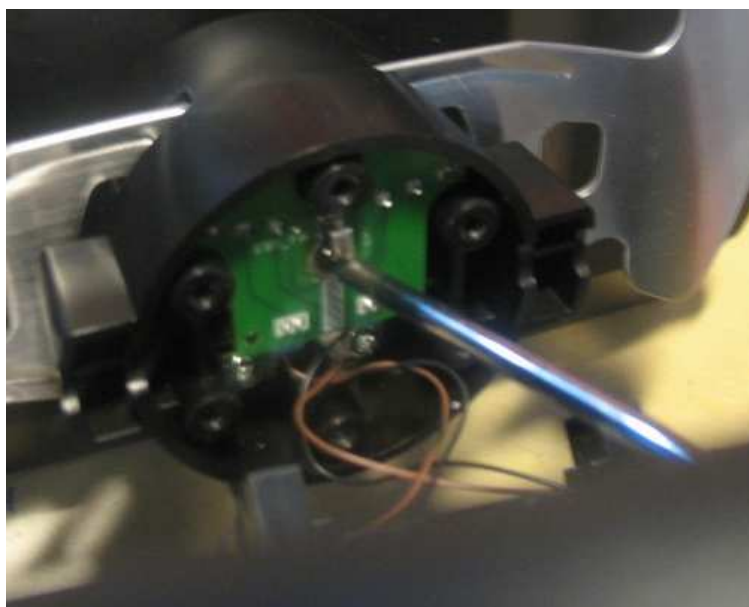
### Step #1

Remove the six front wheel screws by a 4mm Allen key or a battery screwdriver (better and faster) with the appropriate bit.



### Step #2

Remove the screw on the gear switch board using a Phillips screwdriver. Take care to not pull off the wires which are connected to the wheel (black and brown).



#### ARC\_Team srl

**Head Office:** C.so Cavour 40 – 27100 Pavia (ITALY) | **Headquarters:** V.le Brambilla, 98 – 27100 Pavia (ITALY)  
**Tel.** +39 382 528079 | **Fax** +39 382 520167 | **Internet:** <http://www.f1driving.it> | **E-mail:** [info@f1driving.it](mailto:info@f1driving.it)





### Step #3

Disconnect the board connector using a pair of pliers or by hand.

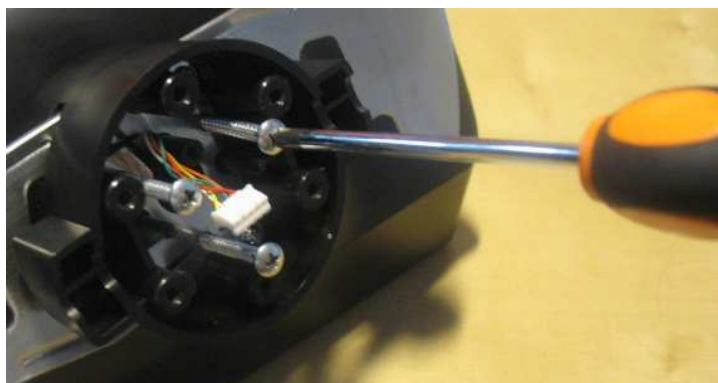
**DON'T DISCONNECT PULLING THE WIRES!**

Now you can put aside the steering wheel.



### Step #4

Remove the three screws which hold the gear shifter using a Phillips screwdriver or by a battery screwdriver (better and faster) with the appropriate Phillips bit.



### Step #5

Just pull the gear shifter and remove it carefully taking care of the white connector.

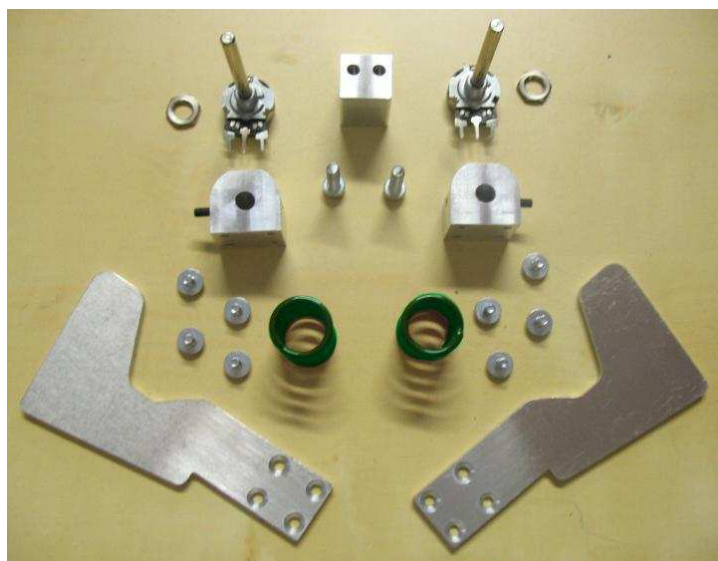
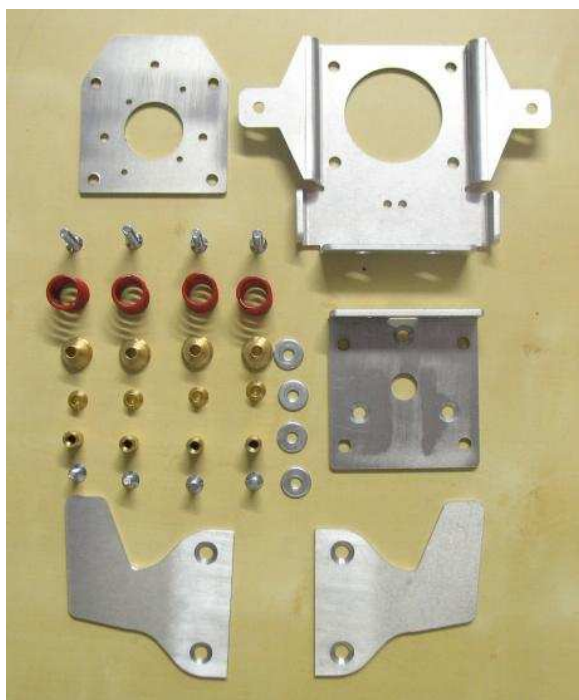


**ARC\_Team srl**

**Head Office:** C.so Cavour 40 – 27100 Pavia (ITALY) | **Headquarters:** V.le Brambilla, 98 – 27100 Pavia (ITALY)  
**Tel.** +39 382 528079 | **Fax** +39 382 520167 | **Internet:** <http://www.f1driving.it> | **E-mail:** [info@f1driving.it](mailto:info@f1driving.it)



## ASSEMBLY PROCEDURE



**All the parts**

**1**

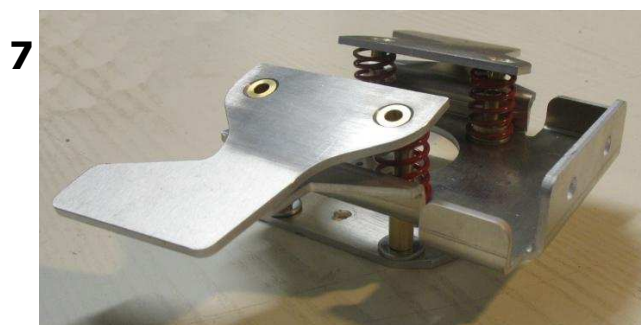
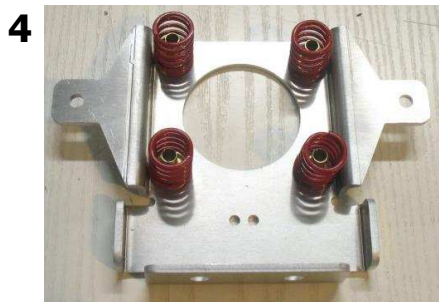
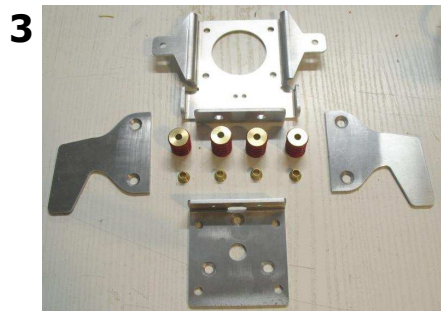


**2**



**ARC\_Team srl**

**Head Office:** C.so Cavour 40 – 27100 Pavia (ITALY) | **Headquarters:** V.le Brambilla, 98 – 27100 Pavia (ITALY)  
**Tel.** +39 382 528079 | **Fax** +39 382 520167 | **Internet:** <http://www.f1driving.it> | **E-mail:** [info@f1driving.it](mailto:info@f1driving.it)



**ARC\_Team srl**

**Head Office:** C.so Cavour 40 – 27100 Pavia (ITALY) | **Headquarters:** V.le Brambilla, 98 – 27100 Pavia (ITALY)  
**Tel.** +39 382 528079 | **Fax** +39 382 520167 | **Internet:** <http://www.f1driving.it> | **E-mail:** [info@f1driving.it](mailto:info@f1driving.it)



11



12



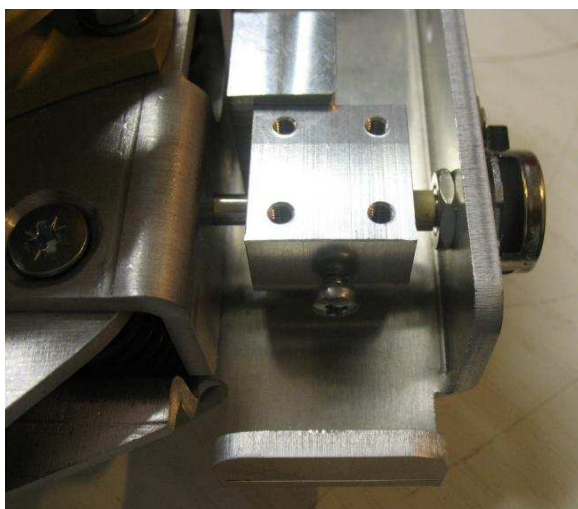
13



Find the centre position of the potentiometers by rotating till they shows circa the same value for both sides (the pots are 5 Kohm).

**NOTE: The value found might be slightly different from the pictures**

14



15

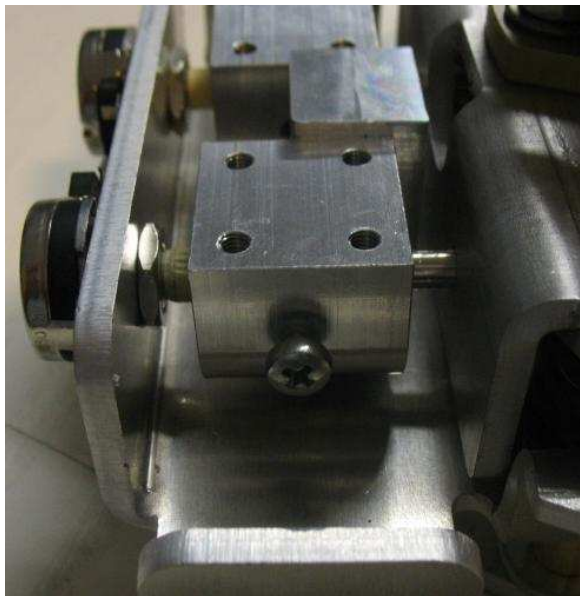


**ARC\_Team srl**

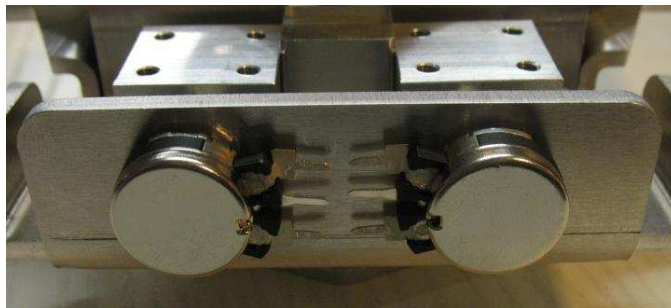
**Head Office:** C.so Cavour 40 – 27100 Pavia (ITALY) | **Headquarters:** V.le Brambilla, 98 – 27100 Pavia (ITALY)  
**Tel.** +39 382 528079 | **Fax** +39 382 520167 | **Internet:** <http://www.f1driving.it> | **E-mail:** [info@f1driving.it](mailto:info@f1driving.it)



16



17



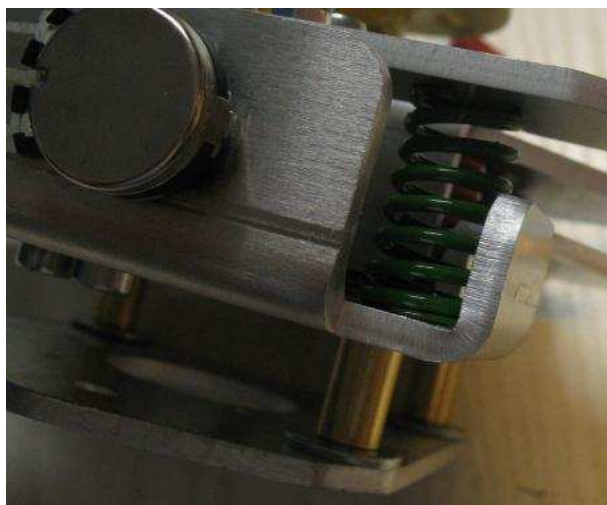
18



19



20



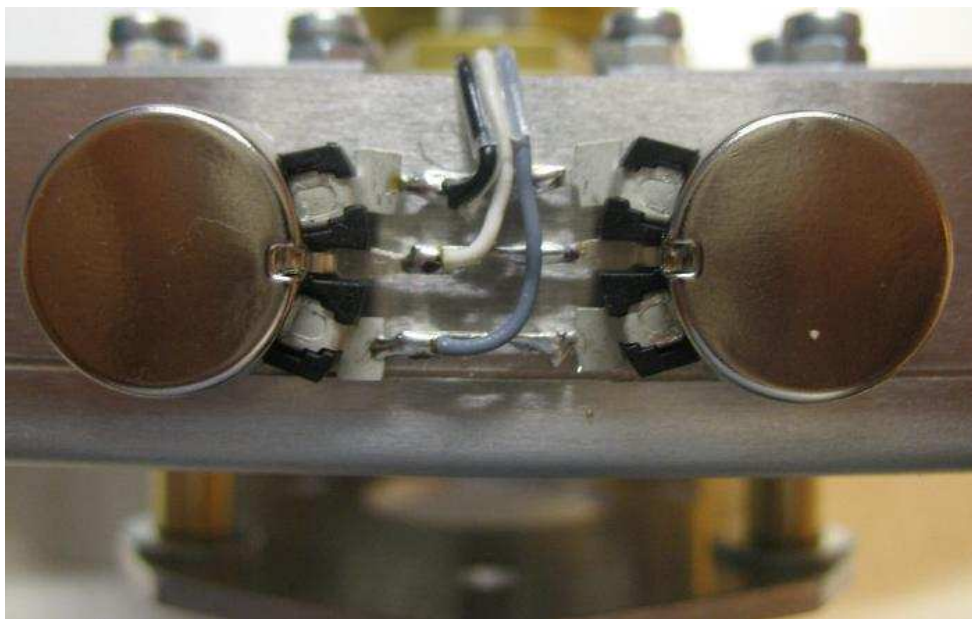
**ARC\_Team srl**

**Head Office:** C.so Cavour 40 – 27100 Pavia (ITALY) | **Headquarters:** V.le Brambilla, 98 – 27100 Pavia (ITALY)  
**Tel.** +39 382 528079 | **Fax** +39 382 520167 | **Internet:** <http://www.f1driving.it> | **E-mail:** [info@f1driving.it](mailto:info@f1driving.it)





21



The potentiometers pins must be connected together as shown.

The wires in this case are:

Black – GND

White – Volt out

Gray - +5 Volt

### **VERY USEFUL INTERNET LINKS:**

#### **Public domain drivers & software:**

<http://www.eksimracing.com/>

<http://www.leobodnar.com/products/SLI-PRO/>

<http://www.leobodnar.com/products/SLI-M/>

#### **Our qualified technical support:**

via Skype: **arc\_team.support**

via Windows Live Messenger

[support@f1driving.it](mailto:support@f1driving.it) (English/Italian real-time support)

[sterumbelow@hotmail.com](mailto:sterumbelow@hotmail.com) (English real-time support)

via E-mail

Daniel - [d.romanoni@f1driving.it](mailto:d.romanoni@f1driving.it) (English/Italian)

Stephen - [s.rumbelow@f1driving.it](mailto:s.rumbelow@f1driving.it) (English)

#### **ARC\_Team srl**

**Head Office:** C.so Cavour 40 – 27100 Pavia (ITALY) | **Headquarters:** V.le Brambilla, 98 – 27100 Pavia (ITALY)  
**Tel.** +39 382 528079 | **Fax** +39 382 520167 | **Internet:** <http://www.f1driving.it> | **E-mail:** [info@f1driving.it](mailto:info@f1driving.it)

